



How to create Class and Assignment

The global leader in addressing plagiarism and delivering rich feedback


Presented by:
PUSTAKAWAN
REFERENCE DEPARTMENT, UTeM LIBRARY




STEP 1: LOG IN


English

For service updates, follow us on Twitter: @TurnitinStatus



Try the free Turnitin iPad app for instructors. 

2015 Global Innovation Awards



[See the winners](#)

Log In

[Log In](#)

[Reset Password](#)
[Create Account](#)

[Guidance](#)
[Help Center](#)



YOU VIEWING: HOME

About this page

This is your instructor homepage. To create a class, click the "Add Class" button. To display a class's assignments and papers, click the class's name.

Universiti Teknikal Malaysia Melaka - Library

+ Add Class

Step 2: Click here

Class ID	Class name	Status	Statistics	Edit	Copy	Delete
----------	------------	--------	------------	------	------	--------

Click Add Class to create your class

Before you or your students can submit a paper, you first need to create a class



Dashboard

All Classes

Join Account

Join Account (TA)

NOW VIEWING: HOME > CREATE CLASS

Create a new class

To create a class, enter a class name and a class enrollment password. Click "Submit" to add the class to your homepage. For a master class, you will also need to enter a TA join password.

Class settings

* Class type

* Class name

* Enrollment password

* Subject area(s)

* Student level(s)

Class start date 25-Jun-2014

* Class end date

Fill the text box

Cancel

Submit

Class created

Congratulations! You have just created the new class: Knowledge Management
If you would like students to enroll themselves in this class, they will need both the enrollment password you have chosen and the unique class ID generated by Turnitin:

Class ID **8184505**
Enrollment password **abd123456**

Give this ID to student

Note: Should you ever forget the class ID, it is the number to the left of the class name on your class list. You can view or change your enrollment password by editing the class.

Click the class name to enter the class and get started creating assignments.

Continue



Dashboard

All Classes

Join Account

Join Account (TA)

NOW VIEWING: HOME

✔ Congratulations! You have created the new class: Knowledge Management. Your class ID is 8184505 and enrollment password is abd123456.

About this page

This is your instructor homepage. To create a class, click the "Add Class" button. To display a class's assignments and papers, click the class's name.

Universiti Teknikal Malaysia Melaka - Library

+ Add Class

All Classes

Expired Classes

Active Classes

Class ID	Class name	Status	Statistics	Edit	Copy	Delete
8184505	Knowledge Management	Active				

THE CLASS HAS BEEN CREATED

Step 3: Click the class



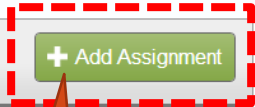
NOW VIEWING: HOME > KNOWLEDGE MANAGEMENT

About this page

This is your class homepage. Click the "Add assignment" button to add an assignment to your class homepage. Click an assignment's "View" button to view the assignment inbox and any submissions that have been made to the assignment. You can make submissions by clicking on the "Submit" option in the assignment's "More actions" menu.

Knowledge Management

CLASS HOMEPAGE



+ Add Assignment

START	DUE	POST	STATUS	ACTIONS
-------	-----	------	--------	---------

Before you or your students can submit a paper, you first need to create an assignment

Step 4: Click Here

New Assignment

Assignment title [?](#)



Point value [?](#)



Optional

- Allow only file types that Turnitin can check for originality
- Allow any file type [?](#)

Start date [?](#)



at :

Due date [?](#)



at :

Post date [?](#)



at :

[+ Optional settings](#)

Submit

Fill the text box

Its recommend that Due date is same as Post date

Close options

Enter special instructions ?

Allow submissions after the due date? ?

- Yes
- No

Originality Report

Generate Originality Reports for submissions? ?

- Yes
- No

Generate Originality Reports for student submissions ?

immediately (can overwrite reports until due date) ▼

Exclude bibliographic materials from Similarity Index for all papers in this assignment? ?

- Yes
- No

Exclude quoted materials from Similarity Index for all papers in this assignment? ?

- Yes
- No

**Read the instruction and choose appropriate radio button:
Below is recommended selection**

Select the middle one

immediately (can overwrite reports until due date) ▼

immediately first report is final

immediately (can overwrite reports until due date)

on due date



Continue...

...continue

Allow students to see Originality Reports? [?](#)

- Yes
- No

Submit papers to: [?](#)

no repository ▼

Search options: [?](#)

- Student paper repository
- Current and archived internet
- Periodicals, journals, & publications

GradeMark

Attach a rubric/form to this assignment [?](#)

Note: students will be able to view the attached rubric/form and its content prior to submitting.

Create a rubric ▼ Launch Rubric/Form Manager

Find a rubric that's right for your assignment in Turnitin Teaching Tools

Would you like to save these options as your defaults for future assignments?

Submit

Select the no repository (this option will allow your paper not store in Turnitin's database)

no repository ▼
standard paper repository
no repository

Your option

✔ Congratulations! You have created your first assignment. To add students or view your student list click the "students" tab above.

About this page

This is your class homepage. Click the "Add assignment" button to add an assignment. Once you have created an assignment, you can make changes to the assignment. You can make submissions by clicking on the "Submit" option in the assignment's "More actions" menu.

Knowledge Management

CLASS HOMEPAGE

[+ Add Assignment](#)

	START	DUE	POST	STATUS	ACTIONS
Project 1					
PAPER	25-Jun-2014 11:35AM	30-Sep-2014 11:59PM	30-Sep-2014 12:00AM	0 / 0 submitted	View More actions ▼

If you need to submit your own paper or non-enrolment student in this assignment.

Click submit button

- [Edit settings](#)
- [Submit](#)
- [Delete assignment](#)



- Dashboard
- Assignments**
- Students
- Grade Book
- Libraries
- Calendar
- Discussion
- Preferences

NOW VIEWING: HOME > KNOWLEDGE MANAGEMENT > PROJECT 1

About this page

This is your assignment inbox. To view a paper, click the paper's title. To view an Originality Report, click the paper's Originality Report icon in the similarity column. A ghosted icon indicates that the Originality Report has not yet been generated.

Project 1

INBOX | NOW VIEWING: NEW PAPERS ▾

<input type="button" value="Submit File"/>								GradeMark Report Edit assignment settings
<input type="checkbox"/>	AUTHOR	TITLE	SIMILARITY	GRADE	RESPONSE	FILE	PAPER ID	DATE

Your inbox for this assignment or assignment folder is currently empty. If you would like to submit a paper to this assignment, click here.

Submit: **Single File Upload**

STEP ● ○ ○

Cut & Paste Upload

Author

Non-enrolled student

First name

Siti

Last name

Saluwa

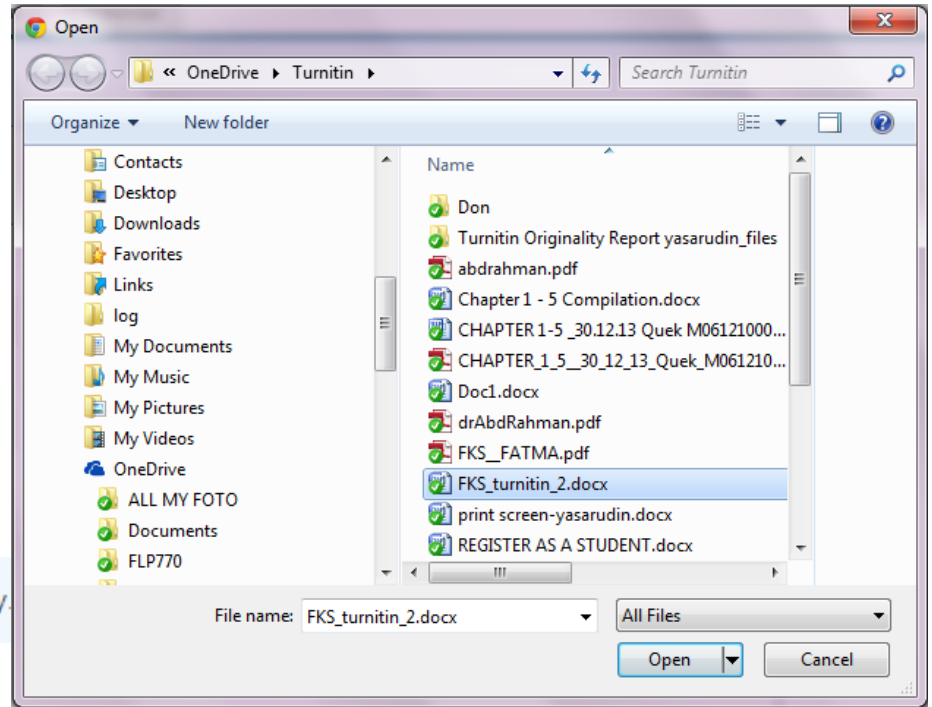
Submission title

Assignment 1

The file you are submitting will not be added to any repository.

What can I submit?

ABSTRACT.docx Clear file



Upload Cancel

Submit: Single File Upload

Please confirm that this is the file you would like to submit...

Author:

Saluwa Siti

Assignment title:

Project 1

Submission title:

Assignment 1

File name:

ABSTRACT.docx

File size:

144.12K

Page count:

8

Word count:

1248

Character count:

7099



Confirm

Cancel

Congratulations - your submission is complete! This is your digital receipt. You can print a copy of this receipt from within the Document Viewer.

Author:

Saluwa Siti

Assignment title:

Project 1

Submission title:

Assignment 1

File name:

ABSTRACT.docx

File size:

144.12K

Page count:

8

Word count:

1248

Character count:

7099

Submission date:

25-Jun-2014 12:31 MYT

Submission ID:

436600093

ABSTRACT

Organizations from various industrial sectors have been looking for new product development seeking out packaging solutions to replace traditional process using petrochemical compound. The implementation of a method to support it, Quality function deployment (QFD) used to provide a graphical connective method to aid organizations attention on the necessities of customers throughout the whole development cycle of a product or process. In recent years, the development of the world economy has been imbalanced, with increasing oil prices, and with the irreversible deterioration of oil production standing no further than a couple of years distant, bio plastics have been a choice for most organizations to be manufactured into sustainable products to replace petrochemical plastic packaging. Presently, there are a number of distinctive compatible plastics seems obtainable in the market and the number is increasing every day. Bio plastics in Malaysia are still at a very nascent stage as equated to the European market, where bio plastic products are commercially obtainable. Malaysia bio plastics manufacturing has an extensive way to go in terms of invention, new materials, and expertise. This research aims to investigate the European bio plastic approach that drive the evolutions of plastics and contribute significantly to a society needs based on Quality function deployment method in terms of transforming customer needs into suitable technical requirements for each phase of a product growth life cycle and examine how Malaysia can adopt the same approach to design and develop the applicability of bio plastics in Malaysian market. This research will use QFD method advocated by Dr. Yoji Akae (1985). A qualitative approach in the form of interviews to collect respondents' answer was carried out. Furthermore, this research attempts to suggest the innovative suggestions to the Malaysian plastic industry for better development of bio plastics. The demand for bio plastics makes it one of the fastest growing thermoplastic product types globally. Today in European market, bio plastics are mature materials and have entered the market of mass product which is characterized by high growth and strong diversification. Following the European approach on bio plastic, Malaysia will be stepping a new groundbreaking in the country's efforts to provide an alternative to non-biodegradable petroleum-based plastic.

[Go to assignment inbox](#)

[Submit another file](#)

This is your assignment inbox. To **view a paper**, click the paper's **title**. To view an **Originality Report**, click the paper's Originality Report icon in the **similarity** column. A ghosted icon indicates that the Originality Report has not yet been generated.

Project 1

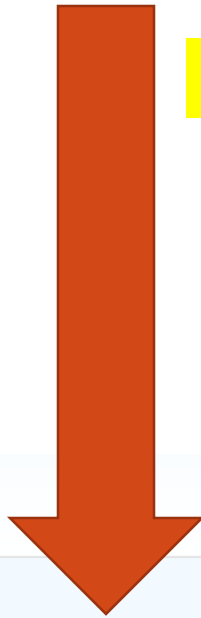
INBOX | NOW VIEWING: NEW PAPERS ▾

Submit File

GradeMark Report | Edit assignment settings

	AUTHOR	TITLE	SIMILARITY	GRADE	RESPONSE	FILE	PAPER ID	DATE
<input type="checkbox"/>	Saluwa Siti	Assignment 1	--		•		436600093	25-Jun-2014

The paper is being process.



Project 1

INBOX | NOW VIEWING: NEW PAPERS ▾

Submit File

GradeMark Report | Edit assignment settings

	AUTHOR	TITLE	SIMILARITY	GRADE	RESPONSE	FILE	PAPER ID	DATE
<input type="checkbox"/>	Saluwa Siti	Assignment 1	12%		•		436600093	25-Jun-2014

Turnitin Document Viewer - Google Chrome

https://www.turnitin.com/dv?s=1&o=436600093&u=26637981&lang=en_us&

Knowledge Management Project 1 - DUE 30-Sep-2014

Assignment 1
BY SALUWA SITI

Originality GradeMark PeerMark

turnitin 12% SIMILAR OUT OF 0

Paper 1 of 1

plastics and contribute significantly to a society needs based on Quality function deployment method in terms of transforming customer needs into suitable technical requirements for each phase of a product growth life cycle and examine how Malaysia can adopt the same approach to design and develop the applicability of bio plastic in Malaysian market. This research will use QFD method advocated by Dr. Yoji Akao (1965). A qualitative approach in the form of interviews to collect respondents' answer was carried out. Furthermore, this research attempts to suggest the innovative suggestions to the Malaysian plastic industry for better development of bio plastics. The demand for bio plastics makes it one of the fastest growing thermoplastic product types globally. Today in European market, bio plastic are mature materials and have entered the market of mass product which is characterized by high growth and strong diversification. Following the European approach on bio plastic, Malaysia will be mapping a new groundbreaking in the country's efforts to provide an alternative to non-biodegradable petroleum-based plastic.

To download Turnitin report paper

Download PDF of current view for printing
Download PDF of digital receipt for printing
Download submitted file

The download is being process.

Match Overview

Rank	Source	Similarity
1	ntnu.diva-portal.org Internet source	2%
2	www.scribd.com Internet source	2%
3	www.yespaper.net Internet source	2%
4	Submitted to Universit... Student paper	2%
5	www.newsabahtimes.... Internet source	1%
6	eprints.utar.edu.my Internet source	1%
7	Submitted to Universiti... Student paper	1%

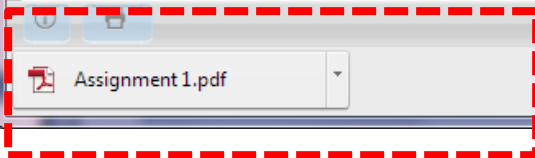
PAGE 1 OF 3

Text-Only Report

to suggest the innovative suggestions to the Malaysian plastic industry for better development of bio plastics. The demand for bio plastics makes it one of the fastest growing thermoplastic product types globally. Today in European market, bio plastic are mature materials and have entered the market of mass product which is characterized by high growth and strong diversification. Following the European approach on bio plastic, Malaysia will be mapping a new groundbreaking in the country's efforts to provide an alternative to non-biodegradable petroleum-based plastic.

3	www.yespaper.net Internet source	2%
4	Submitted to Universit... Student paper	2%
5	www.newsabahtimes.... Internet source	1%
6	eprints.utar.edu.my Internet source	1%
7	Submitted to Universiti... Student paper	1%
8	www.dsv.su.se Internet source	1%

Download and save in your storage



PAGE: 1 OF 8

Text-Only Report

Show all downloads... x

PDF file report review on Turnitin

Assignment 1.pdf - Adobe Reader

10 / 11 102%

Assignment 1

ORIGINALITY REPORT

12%	10%	1%	7%
SIMILARITY INDEX	INTERNET SOURCES	PUBLICATIONS	STUDENT PAPERS

PRIMARY SOURCES

1	ntnu.diva-portal.org Internet Source	2%
2	www.scribd.com Internet Source	2%
3	www.yespaper.net Internet Source	2%
4	Submitted to University of KwaZulu-Natal Student Paper	2%

HELP CENTRE

For more explore on Turnitin kindly observe this
HELP CENTRE

English (United States)

Create Account

Log In



Features

Resources

Customers

Training

Support

About

Support Services

Help Center

Integrations

System Requirements

System Status

Support Services

Help Center

Integrations

System Requirements

System Status

Help Center

Find Help Center Solutions

Search for:

*in

All Solutions

FIND HELP CENTER SOLUTION

Search Help Center Solutions

ALL SOLUTIONS

Administrator <

Enrollment, Paper Submission, Originality Reports, GradeMark, Passwords...

Student <

Enrollment, Paper Submission, Originality Reports, GradeMark, Rubrics...

Integrations <

Integrations/LMS -Errors, Blackboard, Moodle, eCollege, Angel...

Instructor <

Enrollment, Paper Submission, Originality Reports, GradeMark, GradeBook...

Top FAQ Solutions <

Known Issues, Turnitin General Info, Password FAQ, Paper Submission FAQ, Enrollment FAQ...

Known Issues Summary<